



FRACTA. COLLECTION N. 1
By Sofia Rodriguez

Corta Vida was born in me during a journey, in the midst of those simple moments that somehow stay with you forever.

This collection is my way of sharing small pieces of the world that left a mark on me—places where I felt something deep, where I found myself, got lost, or simply breathed in peace.

Editorial by Doblece Studio

FRACTA

"Inspired by the idea of fractures
and irregular forms found in
nature."

MADE IN MÉXICO



TUWAD = TUWADAN



BRUNYARCH



PECATU



TA' MARIJA



DAISY LAKE



CLAY CLIFFS



MONTGÓ



MAYA MAY



MAINGON



GUINSAANAN

Each piece is inspired by a corner of the planet I visited and loved, and in each one, I've tried to leave a **fragment of that emotion.**

They are human figures that carry the shapes, textures, and silences of nature. Each jewel is unique, like the moment that made it possible.



TUWAD – TUWADAN

Philippines

13.9610°N 124.2565°E

Tuwad-Tuwadan is a place where rocks and vegetation blend in harmony. Nature shapes the landscape with strength and calm.

BRUNYARCH

Tasmania, Australia

-43.2833° S 147.1667° E

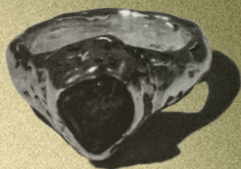
The Arch, on Bruny Island, is a natural arch carved by the ocean, where wind and waves create a wild and powerful spectacle.



PECATU

Bali, Indonesia

8.831536° S 115.126452° E

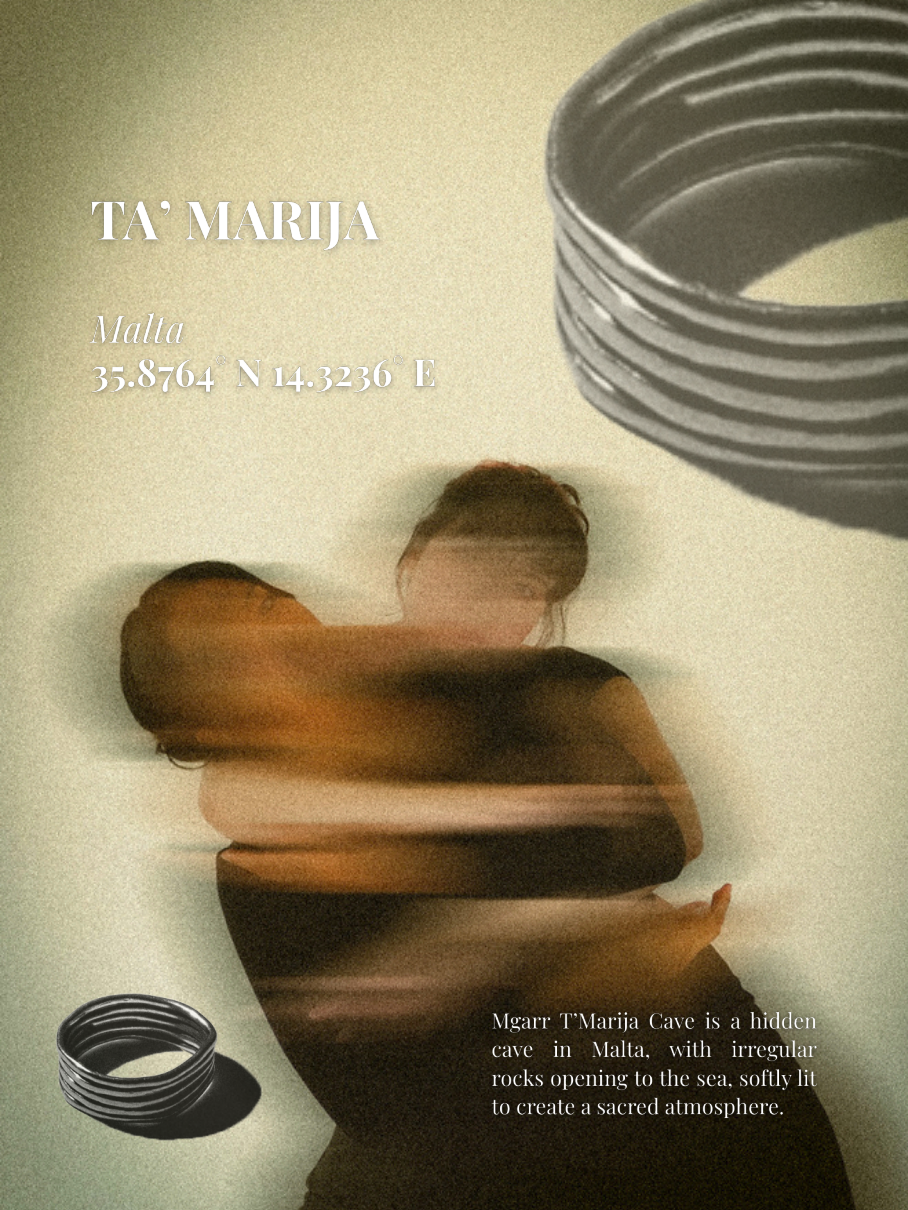


Pecatu, located in Uluwatu, Bali, combines steep cliffs with hidden golden-sand beaches. It's a natural setting of sacred calm and wild beauty.

TA' MARIJA

Malta

35.8764° N 14.3236° E

A photograph of a man and a woman embracing in a cave. The man is shirtless and has his arms around the woman, who is wearing a dark, sleeveless top. They are positioned in the lower half of the frame. In the upper right corner, a large, dark, ribbed metal ring is visible, partially cut off by the edge of the image. In the lower left corner, a smaller, similar metal ring is shown. The background is a light, textured wall, possibly the interior of a cave.

Mgarr T'Marija Cave is a hidden cave in Malta, with irregular rocks opening to the sea, softly lit to create a sacred atmosphere.

DAISY LAKE

Whistler, Canada

49.9925 N 123.1278 W



Daisy Lake, in Whistler, lies between mountains and forests. Its waters reflect snowy peaks in a serene, majestic landscape.

CLAY CLIFFS

Malta

35.9021° N 14.2959° E

Clay Cliff is a reddish cliff over the Mediterranean Sea in Malta, with warm textures and gentle waves. A unique natural landscape



A person wearing dark clothing is sitting on a large, clear, textured rock or ice formation. The person's legs are spread out, and they appear to be resting. The background is a plain, light-colored surface.

MONTGÓ

Montgó L'Escala España

35.8764° N 14.3236° E

Montgó, near La Escala España, is a rocky massif overlooking the Mediterranean. Its trails and cliffs reveal the wild beauty of the Costa Brava.



MAYA MAY

Thailand

7.6789° N 98.7650° E

Maya Bay, in Thailand, is a hidden cove surrounded by limestone cliffs. Its turquoise water and white sand create a dreamlike, jungle framed paradise in the Andaman Sea.

MAINGON

Tasmania, Australia

-43.18724° S 147.84418° E



Remarkable Cave in Maingon Bay is a natural rock tunnel offering unique views of the ocean shaped like Tasmania. A place marked by the power of the sea.

GUINSAANAN

Catanduanes, Philippines

13.6729° N 124.4177° E

Guinsaanan in Baras, Catanduanes, is a coastline of green cliffs and rocks shaped by sea and wind. A wild, remote landscape.



Do you want to know more about the place that inspired each ring?

Just type the name of the piece into Google or search it on Google Maps. You'll find images, stories, and landscapes that gave life to each design.

**corta
vida**

FRACTA. COLLECTION N.1
By Sofia Rodriguez

“Somos una vez en la vida”
Corta Vida

Editorial by Doblece Studio